



**SOUND
STREAMS**

Lawrence Cherney, Artistic Director

NEW DIRECTIONS IN MUSIC

Technical Rider



HELL'S FURY, THE HOLLYWOOD SONGBOOK

Staging and Concept | Tim Albery

Design | Michael Levine

Lighting | Thomas Hase

Video | Cameron Davis

Costume | Michelle Tracey

All information provided in the tech rider is TO BE CONFIRMED. Best efforts have been made to represent the show as accurately as possible. Updates will be provided as they become available.

CONTENTS

CONTACTS	3
GENERAL	3
<i>SYNOPSIS</i>	3
<i>TRAVELLING COMPANY</i>	3
<i>PERFORMANCE</i>	3
<i>FREIGHT</i>	3
<i>TRANSLATION SERVICE</i>	3
<i>MEDICAL CONTACTS</i>	4
PHYSICAL REQUIREMENTS	4
<i>VENUE</i>	4
<i>DIMENSIONS</i>	4
<i>STAGE</i>	4
<i>LOADING</i>	4
SET	4
<i>DIMENSIONS</i>	4
SOUND	5
VIDEO	5
LIGHTING	6
WARDROBE	7
PROPS	7
SCHEDULE & LABOUR	7
<i>SUGGESTED SCHEDULE</i>	7
FACILITIES	8
<i>DRESSING ROOMS</i>	8
<i>PRODUCTION OFFICE</i>	8
<i>REHEARSAL SPACE</i>	9
<i>SECURITY</i>	9
<i>RECORDING</i>	9
APPENDIX A	10

CONTACTS

Artistic Director Lawrence Cherney	lcherney@soundstreams.ca
Executive Director Ben Dietschi	bend@soundstreams.ca
Director of Artistic Planning & Outreach Emma Fowler	emmaf@soundstreams.ca
Director of Marketing and Patron Experience Tim Crouch	timc@soundstreams.ca
Production Manager Rick Banville	via Soundstreams
Technical Director Nida Haroon	via Soundstreams

GENERAL

SYNOPSIS

Hanns Eisler's life was the story of exile. The brilliant Austrian, Jewish, Marxist composer fled to Hollywood in 1938, only to be deported a decade later, an early casualty of the McCarthy era. Between film scores, he wrote these passionate songs of nostalgia, horror and longing, adapting lyrics by Brecht, Goethe and Shakespeare. Despite his troubles, this song cycle established Eisler's reputation as one of the 20th century's great composers of German lieder.

TRAVELLING COMPANY

- 1 Production Manager
- 1 Technical Director
- 1 Stage Manager
- 1 Video Director
- 1 Lighting Director
- 1 Director
- 2 Performers

Occasionally, the Artistic Director and/or the Executive Director could join the team.

Presenter is responsible for round-trip flights for 9 company members, local airport transfers, and local transportation if venue is not within walking distance of the hotel. Presenter is also responsible for single room housing (9 rooms) for the Company for the duration of its stay to include night of travel day and night of opening/final performance/strike. The Video Director, Lighting Director, and Technical Director may depart on the day following opening.

PERFORMANCE

This is a ONE ACT performance with NO intermission. The performance is roughly **75** minutes in length.

FREIGHT

Presenter is responsible for round trip freight costs between its venue and Company storage in Toronto, Ontario, Canada. When the Company is booked at multiple venues back to back, freight costs may be split evenly between venues. *Hell's Fury* is expected to be able to ship via ground or sea, whichever is the most cost effective given the circumstances. The full show travels in one 53' truck or 40' sea container.

TRANSLATION SERVICE

Whenever the official language of the country is different than English, the Presenter shall provide the service of a translator during set up and strike.

MEDICAL CONTACTS

The Presenter shall provide names and telephone numbers for the following medical services in the community: General Practitioner // Chiropractor // Physiotherapist // E.N.T. // Dentist // Massage Therapist.

PHYSICAL REQUIREMENTS

VENUE

Hell's Fury can be presented in a traditional proscenium theater, or with appropriate rigging, a black box theater. This production can also be presented in non-traditional venues with advance consultation with the Company.

DIMENSIONS

Minimum Depth | 23' (7m)
Minimum Width | 36' (11m)
Grid Height Minimum | 24' (7,3m)
Minimum proscenium height | 20' (6m)

The set ideally requires at least two (2) working line sets or rigged trusses, or four (4) ½ ton chain hoists to raise the aluminum truss ceiling.

Sightlines are to be carefully considered and seating must be discussed with the company prior to booking.

STAGE

The stage floor must be even, level and free of debris.

LOADING

The venue's loading dock should have direct access to the performance area. In venues without a loading dock, the Presenter will insure that a ramp is available for the loading and unloading of the truck or container to street level, and that there is clear passage from stage level into the performance area. In venues where this is architecturally impossible, the Presenter will make all arrangements for the safe conveyance of the Company's property from the truck or container to theater and back again and is responsible for any damage that may occur during load and off-load.

Please forward section, ground plans, tech specs and inventories of your venue to Soundstreams as soon as possible, along with any other pertinent venue information.

SET

The show is designed as a semi-independent box truss unit with three walls, a deck and ceiling. All arrangements, placement and masking to be discussed with Soundstreams prior to arrival. The set ideally requires at least two (2) working line sets or rigged trusses, or four (4) electric chain hoists to raise the ceiling. Two (2) additional manual chain hoists are required to lift the window.

DIMENSIONS

O.D. of unit: 26'2-1/2"w x 17'6-1/2"h x 15'9-1/2"d
I.D. of playing space: 24'w x 15'4-1/2"h x 15'd
O.D. Truss: 26'2-1/2" x 17'6-1/2" x 13'6"d

THE COMPANY TRAVELS WITH THE FOLLOWING:

- All scenic elements, truss and decking except those items required by the Presenter as listed below.
- An itemized general list of the truck/container contents will be provided prior to shipping.

THE PRESENTER MUST PROVIDE THE FOLLOWING:

- Appropriate rigging hardware, span-sets and motors to raise the truss ceiling to approximately 18'0" from the deck.
- 2 @ ¼ ton manual chain hoists to lift the US window into position
- 1 @ 4'x 8' riser unit @ 12" high
- 1 @ 4'x 4' riser unit @ 12" high
- Various tools and general hardware plus other consumables
- All masking
- 1 @ 12' & 1 @ 14' A-frame ladder

Please see Appendix A for basic groundplan, section and maquette photos. Please contact the company for drawings.

SOUND

THE COMPANY TRAVELS WITH THE FOLLOWING:

- 3 working period microphones with boom stands (2 onstage, 1 upstage of the window)
- All necessary playback files (playback via Isadora)

THE PRESENTER MUST PROVIDE THE FOLLOWING:

- 1 pair of house speakers to be positioned behind the US wall at a height of 12'-14' with professional quality stereo sound, providing clear, undistorted, evenly distributed sound proportionate to hall capacity.
- 1 9' concert grand piano in black. Preferred make and model to be confirmed by Company. The Presenting company will be responsible for all tunings. Matte finish is preferred, but high gloss is acceptable.
- 1 wireless lavalier or similar microphone to be rigged to the DS piano leg.
- 1 Shure SM58 or equivalent to be placed near the SL door.
- All necessary cable
- Clearcom headsets, preferably wireless, run to booth and USL.

Please confirm all speaker hang positions with the Company.

VIDEO

This is a 4 projector show. The company will travel with 3 mini PICO projectors and it will be the responsibility of the Presenter to provide 1 FOH projector with appropriate hanging position, lumen and lenses for the production.

THE COMPANY WILL TRAVEL WITH THE FOLLOWING:

- 3 PICO mini projectors (all mounting hardware and cable included)
- Playback laptop (playback via Isadora)
- All cable and distribution to run projectors

THE PRESENTER WILL PROVIDE THE FOLLOWING:

- 1 @ 10,000 lumen projectors (Panasonic PT-RZ120/PT-RZ970/PT-RZ12 or similar) with cable.
- Appropriate lens (to be determined by Soundstreams)

LIGHTING

The productions lighting designer will make best efforts to utilize the lighting inventory of the presenting venue. **All substitutions must be approved by the company.**

THE PRESENTER WILL PROVIDE THE FOLLOWING:

- 120 2,4 kW dimmers on DMX 512 protocol
- 120 channel control

- 2 MAC Encore Performance WRM (or similar)
- 30 S4-50
- 20 S4-36
- 20 S4-26
- 22 6" Fresnel (w/ barn doors)
- 15 S4 PAR MFL
- 2 S4 PAR WFL
- 6 PINSPOTS or equivalent
- All lighting Gel as required
- All cable as required

CIRCUITING:	61	Grid circuits (inc. 12 running to truss ceiling)
	42	Floor circuits
	3	ground circuit for onstage outlets
	2	u-ground/Edison to truss ceiling for LED
	2	u-ground/Edison to DSR corner of truss for LED (TBC)

THE COMPANY WILL TRAVEL WITH THE FOLLOWING:

- All RGBW LED tape and controllers
- 2 wall plugs
- 1 piano lamp
- 1 ON AIR sign

A lighting plot will be provided at least 2 weeks prior to load in to facilitate the lighting hang prior to our arrival. Please discuss with the Company. Previous LX plot available upon request for pre-planning.

WARDROBE

The Company requires access to an iron, ironing board, washer, dryer and steamer after every performance. There are no wardrobe changes during the performance.

PROPS

THE COMPANY TRAVELS WITH THE FOLLOWING:

- all props, except as listed below. Props list available upon request.

THE PRESENTER MUST PROVIDE THE FOLLOWING:

- 1 small (1' high) tree sapling. Soundstreams will determine type, colour and size based on availability in Presenter's area.
- 1 cubic foot of low moisture potting soil

SCHEDULE & LABOUR

Please be advised that the lighting, audio and soft goods hang must be completed prior to the Company's arrival. Ideally, truck unpack can occur during the LX pre-hang if possible.

HEADS assumes 1 x CARPS, 1 x LX, 1 x AUDIO/VIDEO

SUGGESTED SCHEDULE

PRE-HANG	determined by presenting venue		
DAY 1	0800 - 1200	set load in	heads + 8 carpenters + 4 lighting + 1 a/v + 2 loaders
	1200 - 1300	lunch	
	1300 - 1800	set load in	heads + 8 carpenters + 4 lighting + 1 a/v
	1800 - 1900	dinner	
	1900 - 2300	video install / set load	heads + 8 carpenters + 2 lighting + 1 a/v
	DAY 2	0800-1200	Video & LX focus/sound levels/

		piano delivery/set notes	+ 2 carpenters + 4 lighting + 1 a/v
	1200-1300	lunch	
	1300-1700	cont LX focus/Levels/set notes	heads + 2 carpenters + 4 lighting
	1700-1800	dinner	
	1800-2200	LX levels	SHOW CREW + 1 LX + LX walker
DAY 3	0800-1200	notes TDB	SHOW CREW + TBD
	1200-1300	Lunch Break	
	1300-1700	ONSTAGE REHEARSAL	SHOW CREW
	1700-1800	dinner	
	1800	EXTENDED HALF HOUR CALL	SHOW CREW
	1900	PERFORMANCE	

SHOW CREW minimum

1 stage carpenter
1 lighting operator
1 audio/video operator (or 1 audio & 1 video pursuant to local agreements)

STRIKE

heads + 6 carpenters
+ 2 a/v
+ 1 props technician
+ 1 wardrobe technician
+ 2 loaders

Lighting crew determined by venue

Props Unpack 1 props technician
Wardrobe 1 wardrobe technician

All crew numbers are suggestions only and will be based on local conditions and collective agreements. All final schedules and crew numbers will be determined in coordination with Soundstreams.

FACILITIES

DRESSING ROOMS

The Presenter will provide access to a minimum of 3 clean and sanitary dressing rooms, each equipped with sufficient lighting, tables and chairs, mirrors, toilet, sink, clothes racks and hangers. During performances, assigned dressing rooms shall be maintained for the exclusive use of Artists. The Presenter will provide a secure storage space for the Artists' personal effects. All company members shall have access to a greenroom or common space.

PRODUCTION OFFICE

The Company would appreciate the use of a production office to make phone calls, do accounting and administration. The office should contain table and chairs, electricity and WiFi Internet.

REHEARSAL SPACE

The Presenter must supply a suitable rehearsal space for the Company during load in. The rehearsal space must be equipped with a piano, make and model to be confirmed by the Company. Rehearsal schedule to be confirmed prior to load in. Ideally, the rehearsal space is not less than 25'w x 25'l.

SECURITY

The Presenter shall protect and secure all Company personnel, equipment, props, costumes and belongings while the Company is at the facility. This includes all venues, dressing and production rooms, catering and hospitality areas, the stage, storage areas, and front of house sound and lighting positions. This coverage is to be continuous from the time the Company's Production Staff arrives at the facility until their departure.

RECORDING

The Presenter will take all steps necessary to ensure that no recordings, in part or in totality, either visual or sound, pictures and flashes will be permitted without the written consent of Soundstreams. The use of cameras, recording devices and cellular phones is strictly forbidden during all performances.

Please communicate the following information with Soundstreams:

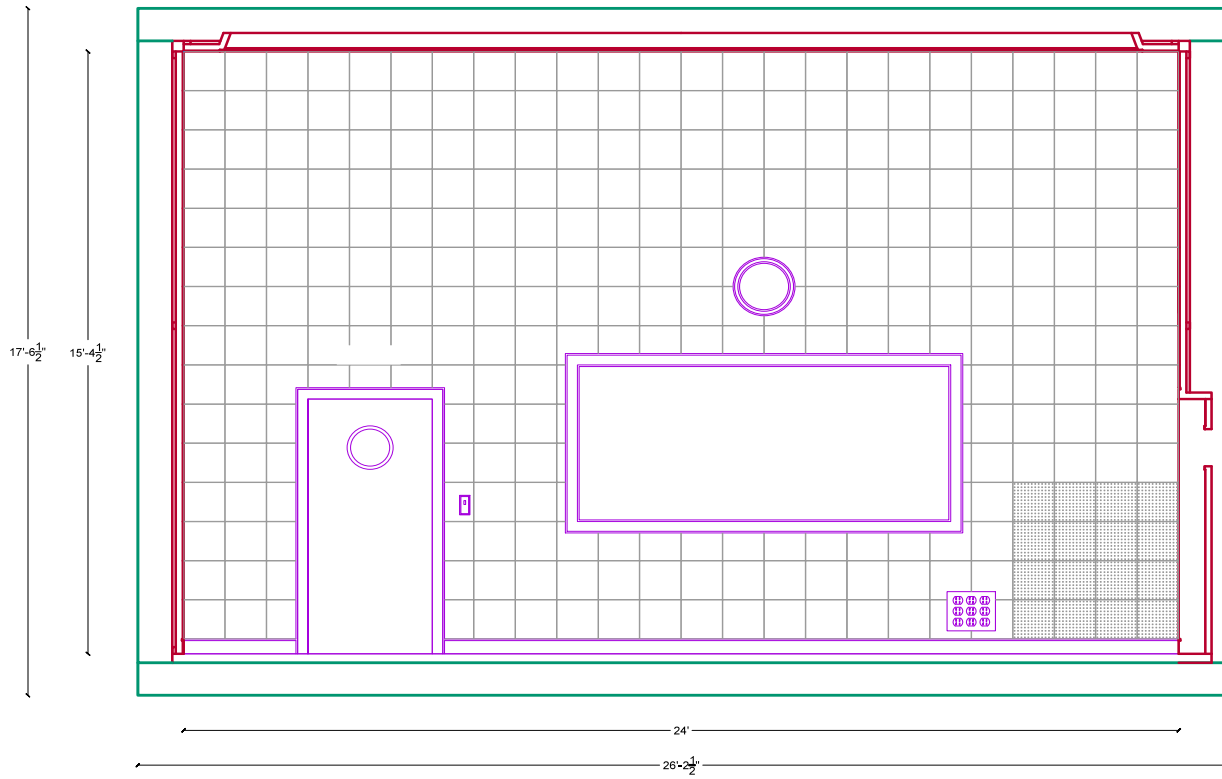
- Theatre grid location (mobile, fixed, booms, etc), if not indicated on plot.
- Loading dock and freight elevator size and access
- Theatre's focus method (ladder, genie, skyjack, etc.)
- Any policies or procedures specific to hall or staffing
- In feet, cable run from USC of box unit to video playback position.

*****All information provided in this document is subject to change*****

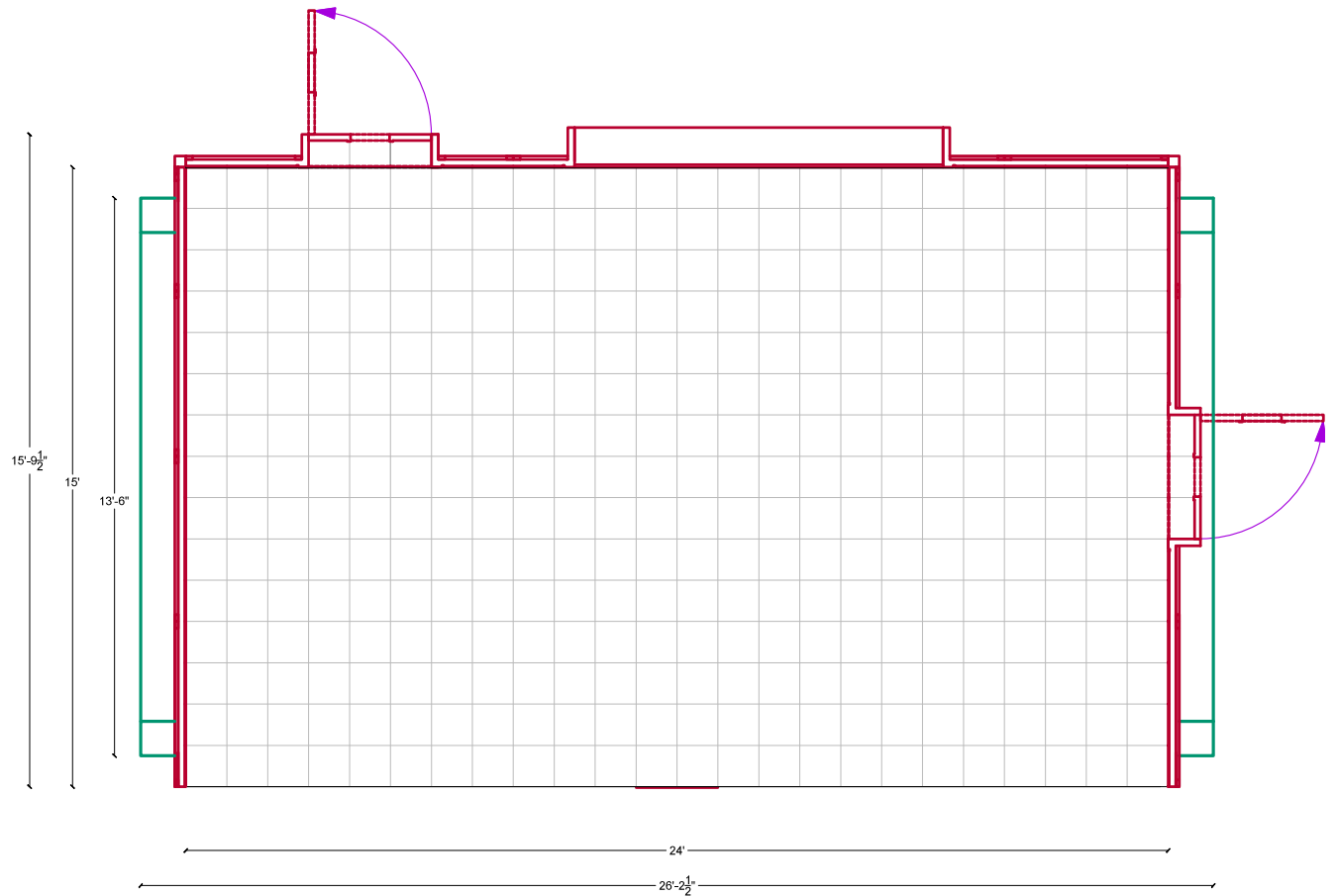
APPENDIX A



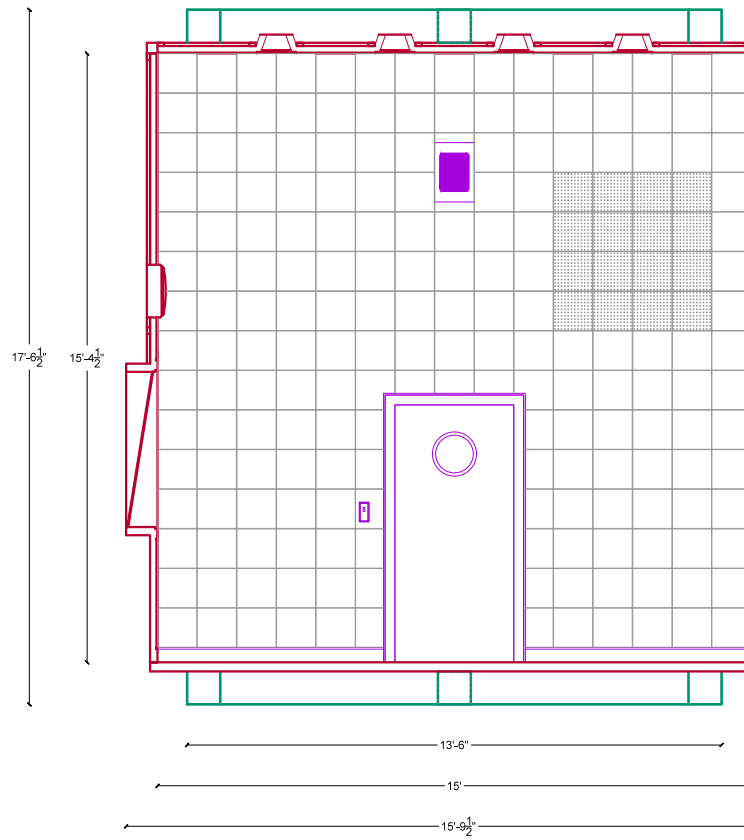
FRONT



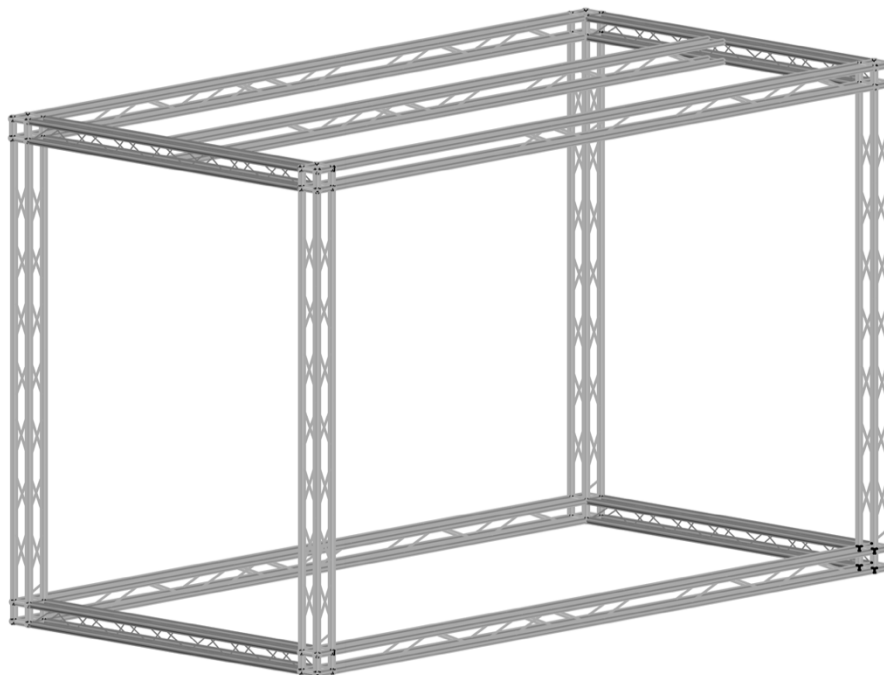
TOP



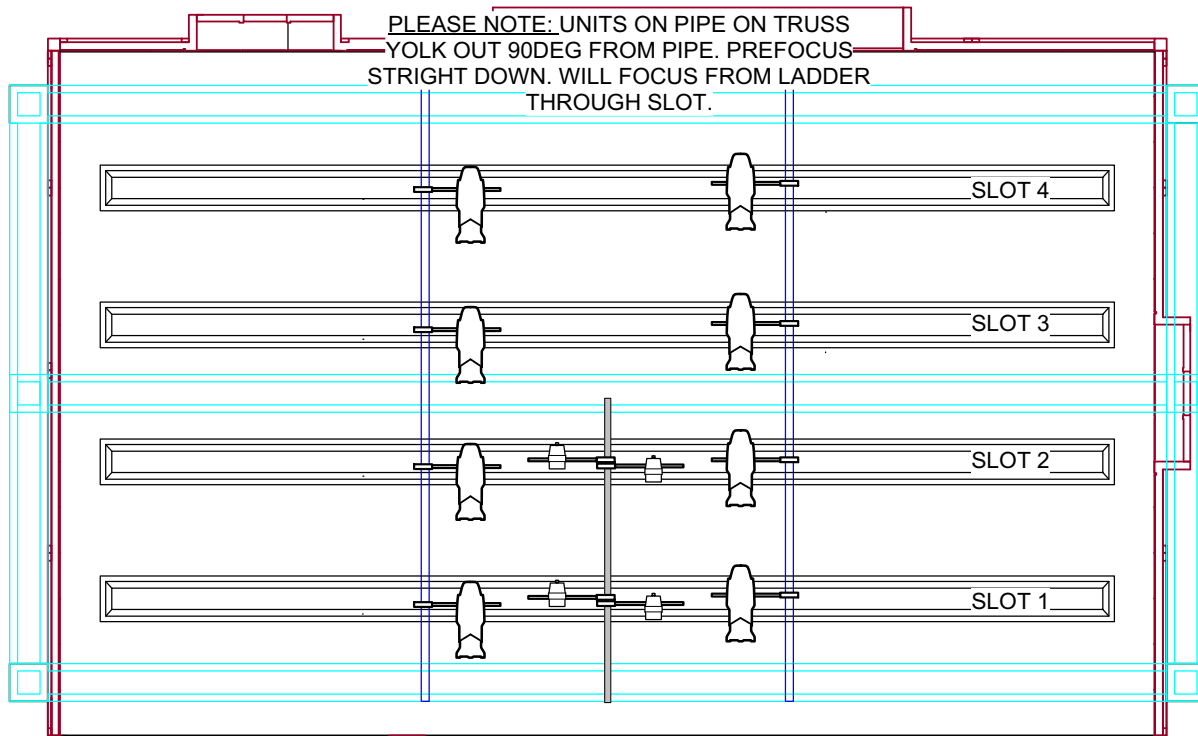
SIDE



TRUSS ISO



LIGHTING POSITIONS – CEILING TRUSS



LED POSITIONS – CEILING TRUSS

