

Musik für das Ende

Preliminary Tour Rider

Ver 1.0 | Nov. 2017



Please note: This is a preliminary tour rider, and is subject to change based on consultation with each individual venue. All Presenters must supply complete technical information for their venue. The information provided must include a floor plan, section, complete theatre plan including seating configurations. All plans must be in CAD format. A full technical equipment inventory must also be provided.

The Project

Fully staged for the first time ever, Soundstreams' production of Musik für das Ende features a diverse vocal ensemble, actor, percussion and synthesizers. In it, the audience is transported beyond place and time, where we become completely immersed in Vivier's world of pure sound and light.

The Set

*Please see attached set drawing

Minimum space dimensions: 10m Wide x 10m Deep

Minimum grid height: 5m

The set is defined by 5 main elements;

- **Seating on 4 sides:** a 4 sided platform seating configuration, staging in the round. (alternate staging available)
- **Horizon Line:** Four, 9m long LED fixtures, surrounding the audience on 4 sides, suspended 4m from stage.
- **Subway Fixtures:** Three, 4m long LED fixtures, suspended diagonally across the space, and flown from a height of 3m to 7m.
- **Pole Light:** a 7m tall square rotating pole, erected on the edge of the playing space, containing LED lighting.
- **Hanging Light Bulbs:** 20 hanging 100w clear incandescent lightbulbs. 10 of these bulbs are controlled by ropes and pulleys, from the stage floor, travelling from 10cm to 700cm above the stage.

The Presenter must provide:

- **Clear and frequent communication between the Presenter's Technical Director and Soundstreams Technical Director. This performance installation uses more than 70 rigging points and requires extensive pre planning on a venue to venue basis.**
- Clean, smooth wooden floor, with a new coat of glossy black paint.
- The stage floor must be able accept screws up to 1 1/2" in length.
- All scaff pipe and rigging cables necessary to install additional rigging positions to accommodate the set install. All rigging cables must have the ability to make fine adjustments in height. Location of points and quality to be determined by Soundstreams Technical Director.
- A personnel lift or A-frame ladder capable of accessing the lighting pipes and rigging.

Soundstreams will provide::

- Horizon line, Subway Fixtures, Pole Light, and Hanging Lightbulbs
- Basic rigging components and pulleys for the main set elements

Initialled

For Soundstreams:
For Presenter:

Date (d/m/y)

Musik für das Ende

Preliminary Tour Rider

Ver 1.0 | Nov. 2017



The Lighting

*Please see attached sample lighting plot

The Presenter must provide:

- a minimum of 72, 2.4kw dimmers in good working condition
- a fully functional professional quality lighting console, capable of theatrical cueing, and effects programming with a minimum of 12 programable faders
- 8, 50degree 575w Source Four ellipsoidal
- 32, 36degree 575w Source Four ellipsoidal
- 22, 26degree 575w Source Four ellipsoidal
- 10, 19degree 575w Source Four ellipsoidal
- 15, 6" Fresnels 500w with barn doors
- 6, 2m tall dance lighting booms, capable of supporting at least 4 lamps each
- 2, Rosco I-Cue moving mirrors for Source Four ellipsoidal, or 2 moving light ellipsoidals
- 2, DMX Irises

Soundstreams will provide:

- all necessary gel and gobo's

The Sound

*Please see attached stage plot

The Presenter must provide:

- 8 full spectrum speakers (wattage appropriate to venue) 4 to be rigged overhead, 4 to be placed on the floor.
- 2, 18" or larger Sub woofer speakers (wattage appropriate to venue) to be placed on the floor.
- Ample Cable for signal distribution and routing
- 4 SM 57 on boom stands each with 50' of cable.
- Clear Com communication system with 6 belt packs and 6 headsets. One Channel of Wireless Com is necessary
- Two MKE 2 or similar microphone elements with ear loop, Tan Colour.
- One Wireless Microphone Transmitter and receiver for MKE 2 Microphone
- 6 black music stands
- 6 music stand lights
- 3 digital synthesizers
- 1 Vo-Coder

Soundstreams will provide:

- Firewire sound card w 8x inputs
- Laptop running Cue Lab 3
- Small Practical Speaker

Initialled

For Soundstreama:
For Presenter:

Date (d/m/y)

Musik für das Ende

Preliminary Tour Rider

Ver 1.0 | Nov. 2017



The Percussion

The Presenter must provide:

- One 2 octave concert glockenspiel and x frame stand
- Single chime note (A) with stand
- 1 pair of MR wood claves
- Bamboo wind chimes & stand
- Thai Gongs E4, B4 on 6 x 6 rack
- Large Tam on low rack
- Thai Gongs E4, B4 on 6 x 6 rack
- Chinese Gong
- Large Bass drum on stand
- small bass drum on stand
- Tubular bells on rack: F4, F#, A#, D
- 1 pair of MR wood claves
- Bamboo wind chimes & stand
- Crotale note - 2 x High B, 2 x High C
- 36" Dream Tam Tam with stand
- 36" Pearl Bass Drum with folding stand
- Single chime note with stand - F, F#, A#, D
- Tuned gong individual pitch E4, B4

The Projection and Video

The performance incorporates the use of two digital projectors for surtitles, focused on opposing venue walls above audience head height. In the event that the venue walls do not provide a smooth projection surface additional hanging flats will be required as projection surfaces.

*****please note the venue technician operates video during the performance and tech period.

The Presenter must provide:

- Two projectors of identical model, 8000 lumens or greater, with remote controlled internal shutters and mounts
- Two 0.8-1.0:1 zoom lens
- Two dedicated 120v, 15amp circuits (transformer if required) and ample U-ground cable to reach the stage grid.
- VGA and remote cable to reach from the projectors to the technician operating location
- One VGA splitter with 2 outputs
- Two dedicated 120v, 15amp circuits (transformer if required) and ample U-ground cable to reach the stage grid.
- Playback computer with a full video Qlab 3 license
- One Infrared Camera with mount and monitor
- One Maestro Camera with mount, stand and 3 Monitors
- Tripod stands for the x3 maestro monitors
- Sufficient AC cable for all cameras and monitors
- BNC splitter & amplifier with a minimum of 3 outputs
- Sufficient runs of BNC cable to connect all video monitors

Soundstreams will provide:

- Qlab Show file

Initialled

Date (d/m/y)

For Soundstreama:

For Presenter:

Musik für das Ende

Preliminary Tour Rider

Ver 1.0 | Nov. 2017



The Company

The company consists of 22 people:

- Director or Associate Director
- Music Director / Synth
- 10 Singers
- 1 Actor
- 1 Child Performer (**To be hired locally by the presenter in consultation with Soundstreams)
- 1 Percussionist
- 1 Synth Player
- Production Manager
- Stage Manager
- Company Manager
- Technical Director and Lighting Director
- Head of Rigging / Rigging Operator
- Head of Sound and Video

The Presenter must provide;

- Daily transportation to and from the theatre
- Four clean dressing rooms with direct access to private washrooms and showers
- Access to laundry in the theatre, or a service to send it out nightly
- A comfortable bed for an adult
- One office with workspace for 5 people and access to the internet and printing
- Access to a kitchen area and greenroom
- Coffee, tea, water, and light snacks for 6 Production Staff during Load IN and the entire company on the day of the first performance.

The Schedule

Below is a sample 3 day schedule, a specific schedule will be created for your venue in consultation with the venue technical director. A 2-day tech schedule is possible with a lighting and rigging pre-hang. This option must be discussed with the Soundstream production manager upon booking the show to ensure a correct pre-hang is achievable for the specific space. A 3-day schedule is preferable in situations where there is more time before opening. Non-Theatrical venues will require an additional 1-3 days of install time.

3 Day Schedule

Day One

08:00 - 12:00 • Rigging Install • Venue Technical Director + 6 Crew

13:00 - 17:00 • Rigging Install & Lighting Install • Venue Technical Director + 6 Crew

18:00 - 22:00 • Sound & Video Install • Venue Technical Director + 6 Crew

Initialled

For Soundstreama:
For Presenter:

Date (d/m/y)

Musik für das Ende

Preliminary Tour Rider

Ver 1.0 | Nov. 2017



Day Two

08:00 - 12:00 • Seating & Masking Install • Venue Technical Director + 6 Crew

13:00 - 17:00 • Lighting Focus, Instrument Setup, SM Setup • Venue Technical Director + 6 Crew

18:00 - 22:00 • Sound System Test, Projector Focus and Lighting board notes • Venue Technical Director + 4 Crew

Day Three

08:00 - 12:00 • Lighting, Projection, and Sound Levels • Venue Technical Director + 2 Crew

13:00 - 18:00 • Technical Work Through with Cast • Venue Technical Director + 2 Crew

19:00 - 19:40 • Pre Show • Venue Technical Director + 2 Crew

20:00 - 21:00 • Performance #1 • Venue Technical Director + 2 Crew

Contact Information

Soundstreams

302-579 Richmond St W

Toronto, Ontario

M5V 1Y6

Canada

T 416.504.1282

Production Manager and TD

- Patrick Lavender
- lavenderlighting@gmail.com

Associate Production Manager

- Kaitlin Hickey
- hickey.kaitlin@gmail.com

Director of Artistic Planning

- Emma Fowler
- emmaf@soundstreams.ca

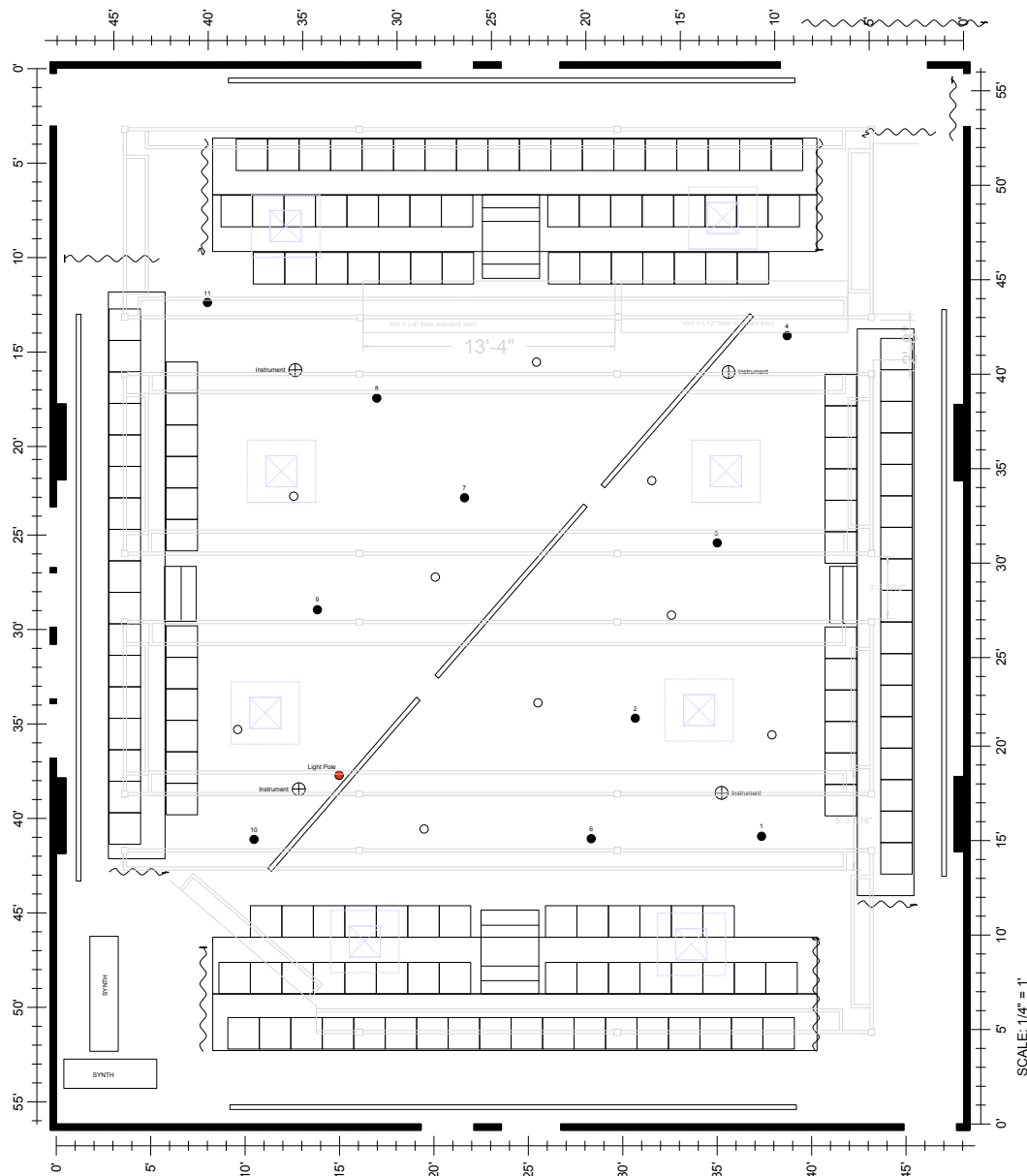
Initialed

For Soundstreams:
For Presenter:

Date (d/m/y)

Musik für das Ende
Preliminary Tour Rider

Ver 1.0 | Nov. 2017



CROWS THEATRE

MFDE

Scale: 1' = 1/2"

Drawn by: Remington North

Initialed
 For Soundstreama:
 For Presenter:

Date (d/m/y)